

Absolute REAL ESTATE AUCTION

Saturday, August 20th
@ 10:00 AM (CST)
at the DeSoto Community Center

88.68+
ACRES
**IN 22 TRACTS &
COMBINATIONS**

AUCTION HELD AT:



400 Boyd St., DeSoto, MO 63020



This property is located on the east side of Highway 21, Old Prairie Road, CR 429 / Peacock Road, Cadet, MO in northern Washington County.

Ideal situation for Residential Development!
2 nice PONDS, both stocked with fish



<https://www.youtube.com/watch?v=nFpOY99ORG8>



HARRIS

Real Estate & Auction

MICHAEL HARRIS

Principal Broker / Auctioneer

Harris Real Estate & Auction

Licensed in Missouri - County Issued

harrisauctions.com

270.970.0200



In Partnership with:



DALE DUNN

President & Founder / Broker

Premier Farm Realty Group

dale@pfrgrp.com

636-443-9481



REAL ESTATE TERMS:

PROCEDURE: The property will be offered in 22 individual tracts or as a whole property. BUYERS PREMIUM: A 10% Buyer's Premium will be added to the final bid and included in the deed transaction sale price. DOWN PAYMENT: 15% as down payment on the day of the auction with balance in cash at closing on or before 30 days. The down payment may be in the form of cashier's check, personal check, or corporate check. YOUR BIDDING IS NOT CONDITIONAL UPON FINANCING, SO BE SURE YOU HAVE ARRANGED FINANCING, IF NEEDED, AND ARE CAPABLE OF PAYING CASH AT CLOSING. CLOSING: Closing shall take place on or before 30 days from auction date. REAL ESTATE TAXES: All 2022 ad valorem taxes will be prorated at closing. SURVEY: The property will be sold by the deed.

800.380.4318 & 270.247.3253 - harrisauctions.com | premierfarmrealtygroup.com

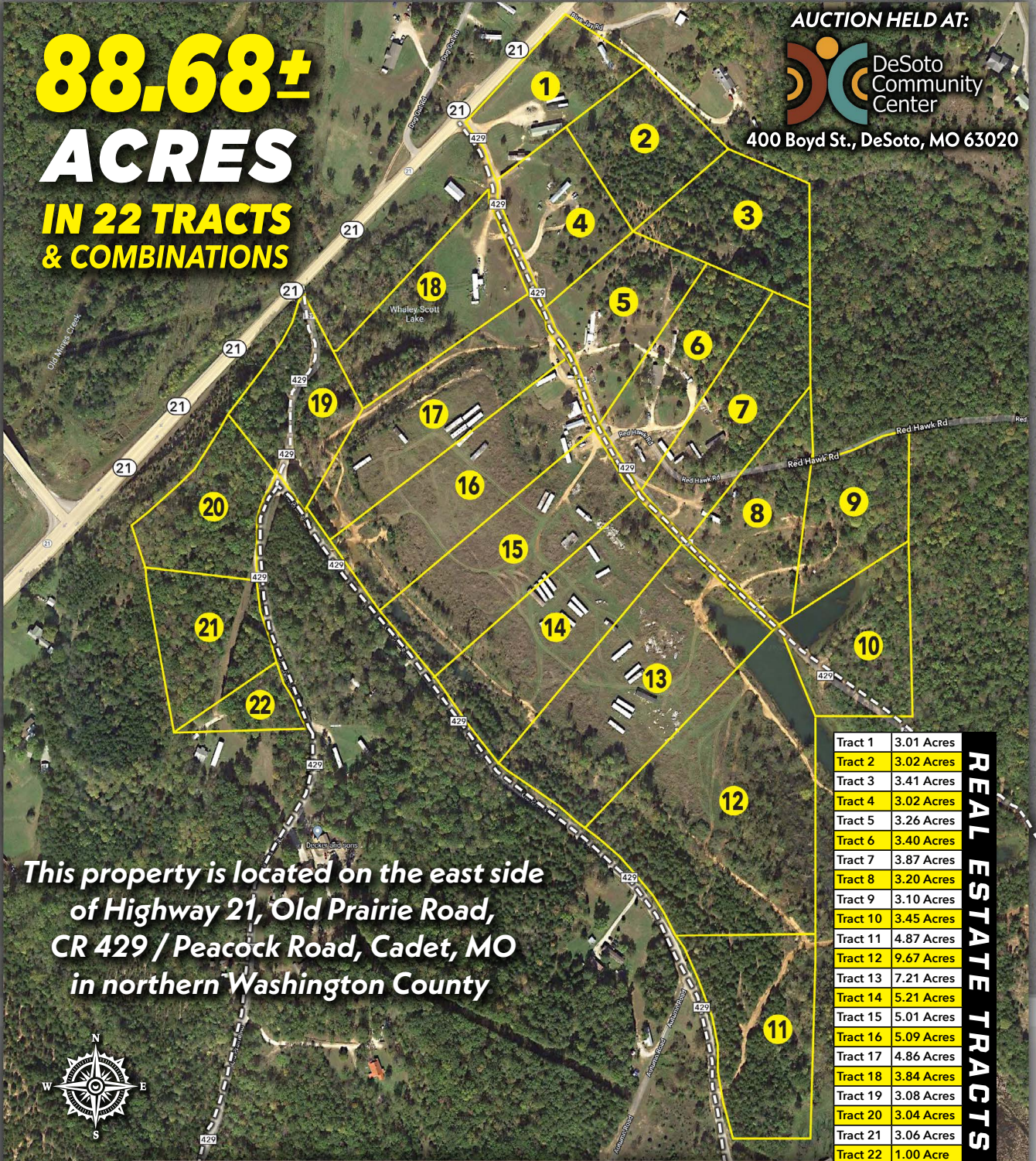
PROPERTY LOCATED: Hwy. 21, Old Prairie Road, CR 429/Peacock Road, Cadet, MO

88.68±
ACRES
IN 22 TRACTS
& COMBINATIONS

AUCTION HELD AT:



400 Boyd St., DeSoto, MO 63020



| | |
|----------|------------|
| Tract 1 | 3.01 Acres |
| Tract 2 | 3.02 Acres |
| Tract 3 | 3.41 Acres |
| Tract 4 | 3.02 Acres |
| Tract 5 | 3.26 Acres |
| Tract 6 | 3.40 Acres |
| Tract 7 | 3.87 Acres |
| Tract 8 | 3.20 Acres |
| Tract 9 | 3.10 Acres |
| Tract 10 | 3.45 Acres |
| Tract 11 | 4.87 Acres |
| Tract 12 | 9.67 Acres |
| Tract 13 | 7.21 Acres |
| Tract 14 | 5.21 Acres |
| Tract 15 | 5.01 Acres |
| Tract 16 | 5.09 Acres |
| Tract 17 | 4.86 Acres |
| Tract 18 | 3.84 Acres |
| Tract 19 | 3.08 Acres |
| Tract 20 | 3.04 Acres |
| Tract 21 | 3.06 Acres |
| Tract 22 | 1.00 Acre |

REAL ESTATE TRACTS

This property is located on the east side of Highway 21, Old Prairie Road, CR 429 / Peacock Road, Cadet, MO in northern Washington County

Absolute
REAL ESTATE AUCTION

Saturday,
August 20th, 2022
@10:00 AM



MICHAEL HARRIS

DALE DUNN

800.380.4318 & 270.247.3253 - harrisauctions.com premierfarmrealtygroup.com